

pop-up

kitchen pia

An innovative concept
for saving space

design: Darko Špiljarić

interior
innovation
award
2015

Best of Best



**Green
Product Award**
Winner 2016

HOLIDAY HOME

Fully equipped and just as functional as the standard size kitchen





URBAN APARTMENT

Save precious space and
obtain additional 5m²



PIA ALTA



VACATION RENTAL

Use your space to the fullest
for maximum relaxation





STUDENT ACCOMODATION

Enjoy this highly functional
and fun kitchen



PIA PETITE



OFFICE

Impress your business partners with a kitchen unlike any other





HOME WELLNESS / GYM

Ideal solution for an
additional kitchen





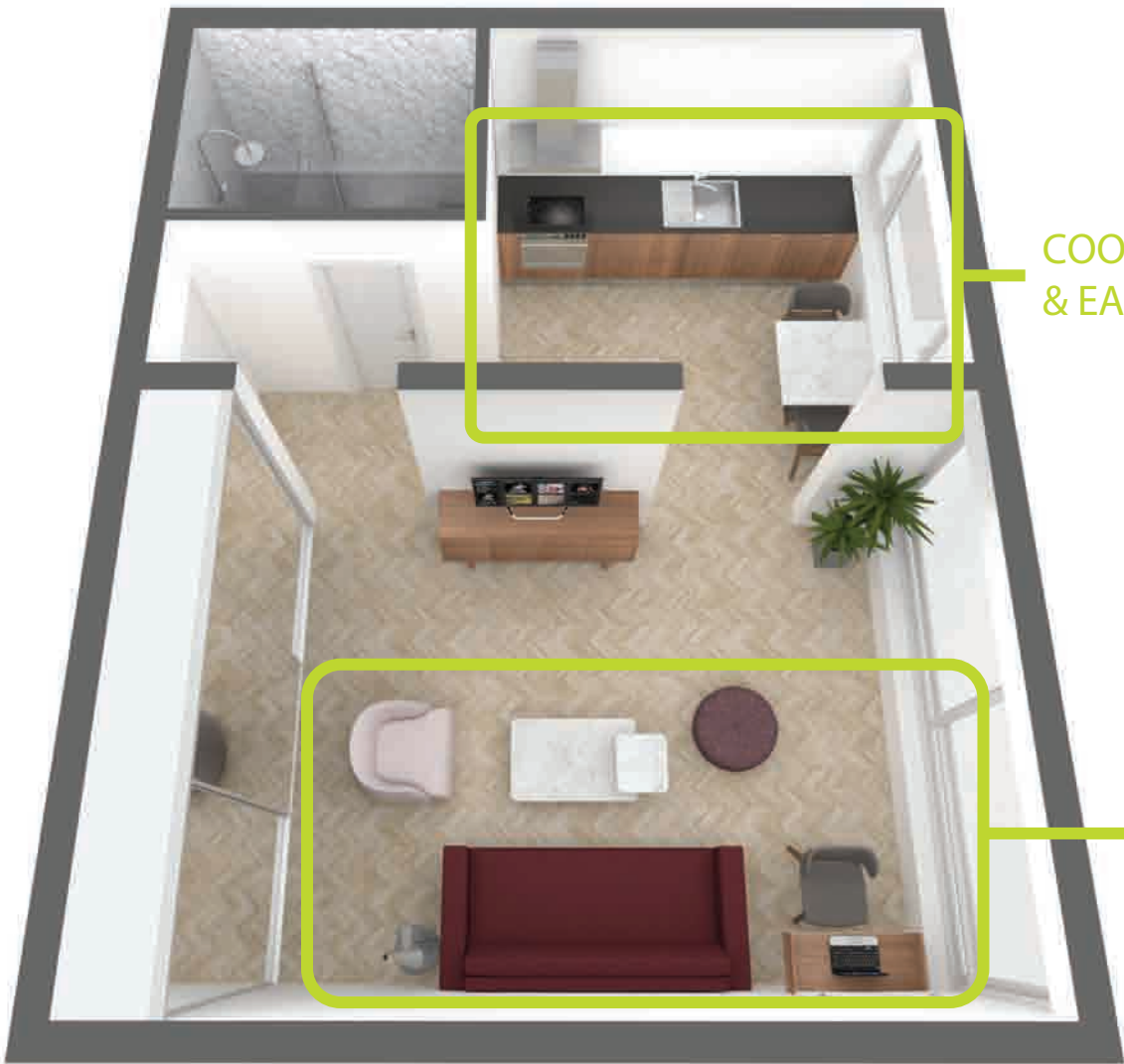
MICRO APARTMENT

PIA gives you the maximum
out of minimum space.





Enjoy smarter way of living, working and vacationing. Forget small, awkward spaces. There is an easier way of functional living...



COOK
& EAT



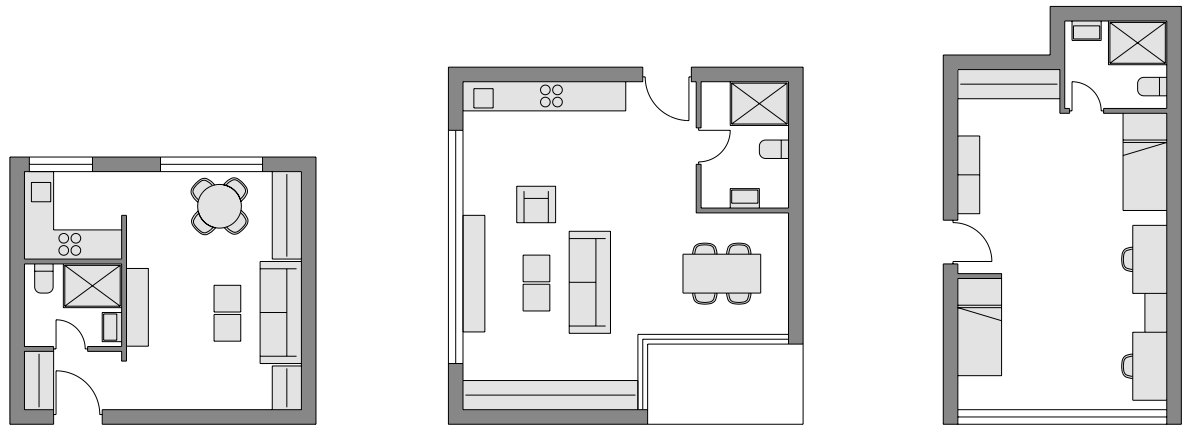
RELAX,
SLEEP
& WO RK

living with pia

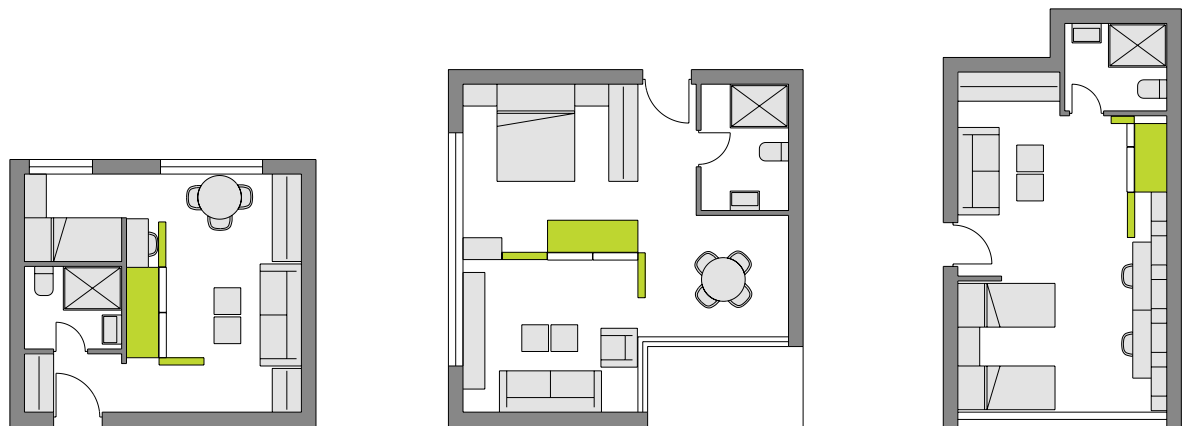


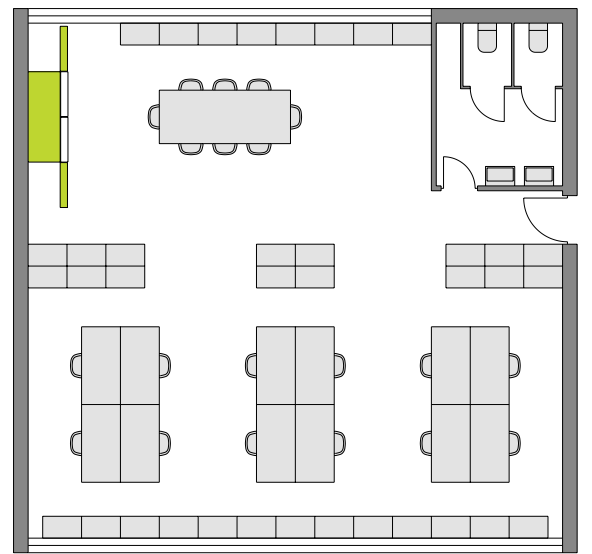
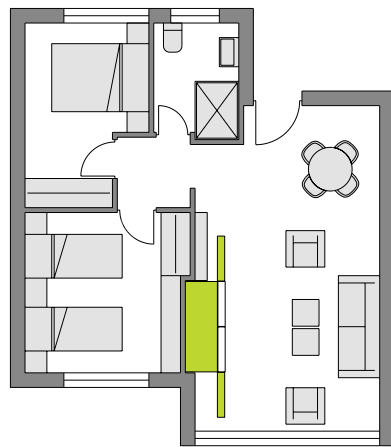
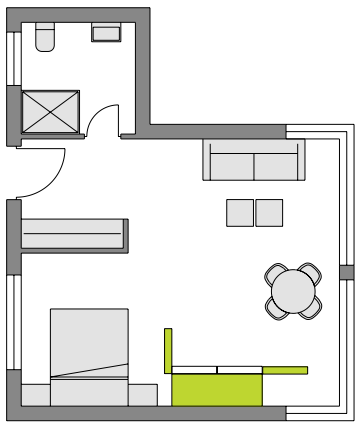
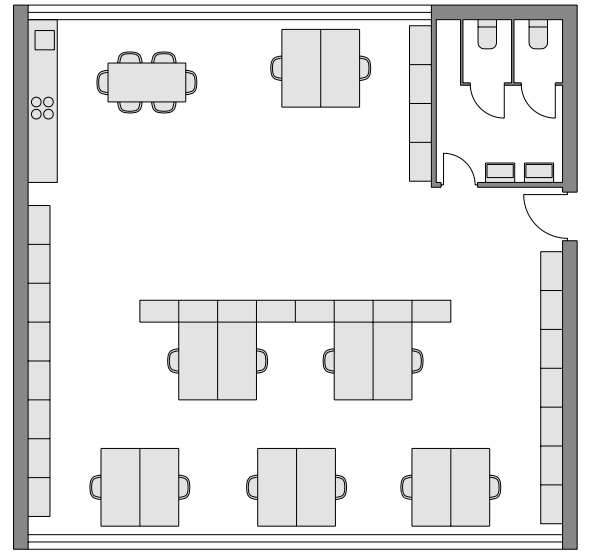
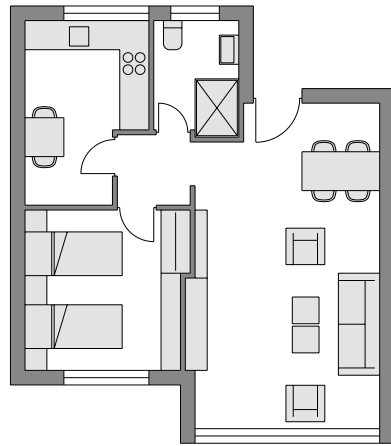
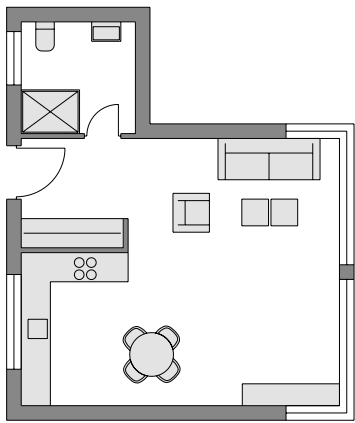
PIA enables new approach to conventional space design and new possibilities in designing small spaces. Multifunctional concept combines two living areas in residential, work and vacation spaces. This is a smart solution for spaces of limited spatial capacity: it saves space and increases functionality (conversion of existing spaces).

BEFORE



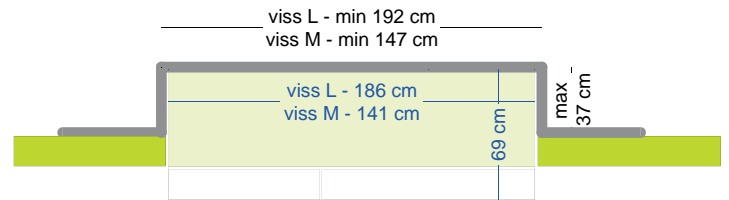
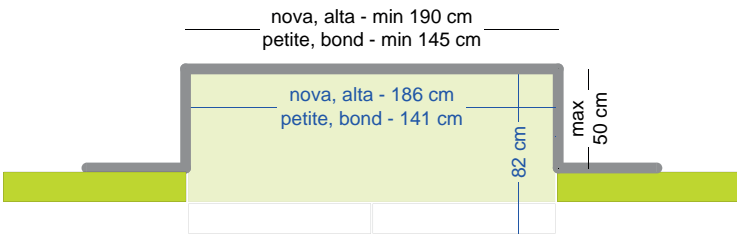
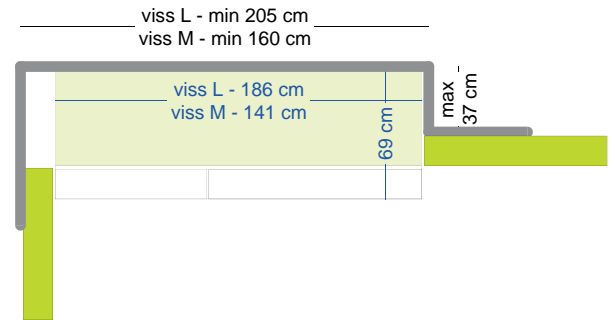
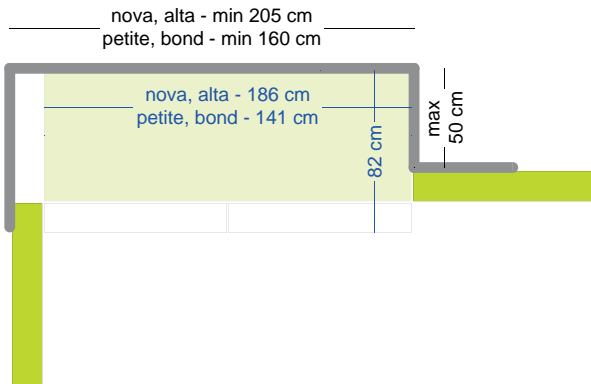
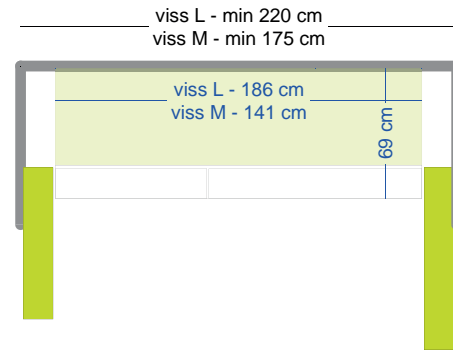
AFTER





DOOR TYPES

ONSET DOORS

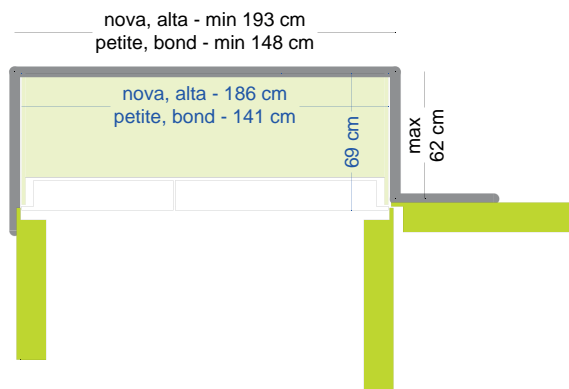


Niche dimensions for kitchen with onset doors
(Nova, Alta, Petite, Bond)

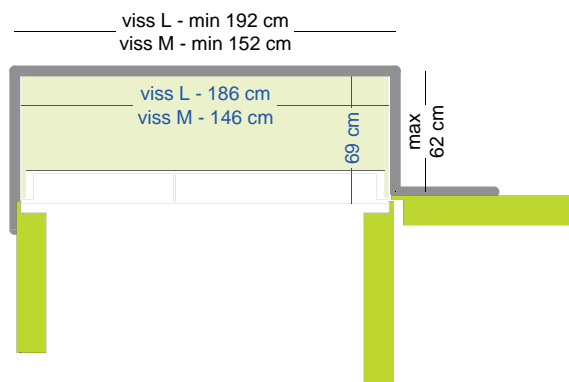
Niche dimensions for kitchen with onset doors
(Viss L, Viss, M)

SPACE REQUIREMENTS

INSET DOORS



Niche dimensions for kitchen with inset doors
(Nova, Alta, Petite, Bond)



Niche dimensions for kitchen with inset doors
(Viss L, Viss M)

One of PIA's many advantages is its ability to be placed anywhere: against a wall, in a corner, in a niche or in the center of space.

When placing it in a niche, there are certain dimension requirements one must mind. PIA model is chosen depending on the width and depth of the niche.

PIA is configured with base unit (NOVA, ALTA, PETITE, BOND, VISS) and onset or inset doors.

PIA BASE UNIT is 66 cm deep, and comes in two widths - 184 and 141 cm. Models NOVA, ALTA AND VISS L are 186 cm wide. Models PETITE, BOND AND VISS M are 141 cm wide. Each model can be mounted either with onset or inset doors.

ONSET doors are 15 cm deep doors which are mounted on top of base unit. Together with 66 cm of base unit depth, this kitchen is 82 cm deep in total.

INSET doors are also 15 cm deep door which enter the space of base unit. This saves even more space and makes the kitchen 69 cm deep.

Doors can be opened at any angle (0-180°) which is very helpful when planning the installation spot.

Pia Nova

DIMENSIONS

closed 186 x 82 x 200 cm

open 374 x 66 x 200 cm

MATERIALS

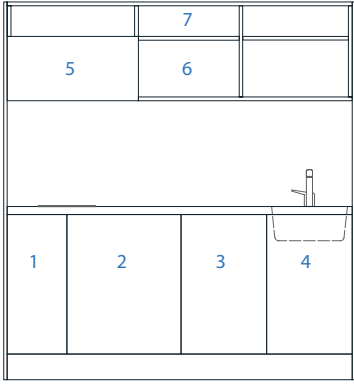
HPL faced particle board or veneer frame, doors, cabinets and inside doors

Worktop laminate 38 mm with inox sink, HPL 6 mm with inox sink or composite material (kerrock)

6 mm worktop, sink and work area sides



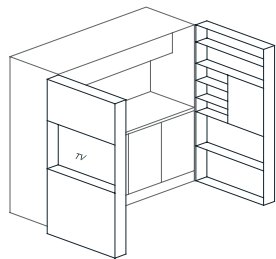
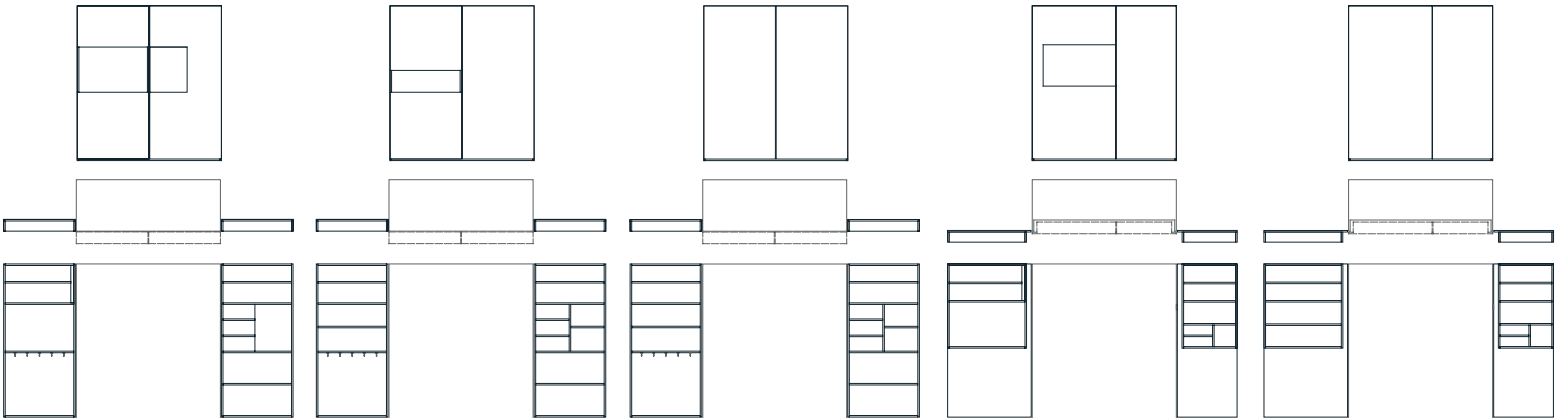
BASE UNIT



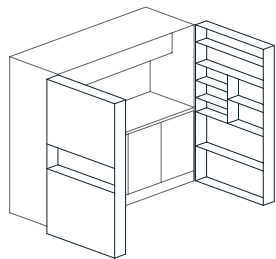
- 1 | 32 cm | cabinet with cooktop, drawer and a shelf
- 2 | 60 cm | place for refrigerator, oven and a drawer or cabinet with a shelf
- 3 | 45 cm | space for a built-in dish washer or cabinet with a shelf
- 4 | 45 cm | sink, faucet and waste separator

- 5 | 69 cm | built-in hood, electricity installations and sockets
- 6 | 113 cm | place for free standing microwave and open shelf
- 7 | 182 cm | open shelf

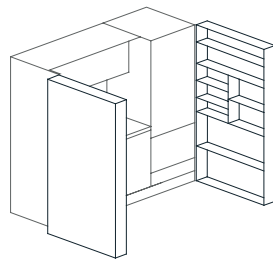
DOOR OPTIONS



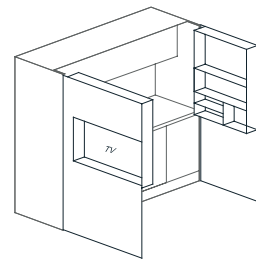
N1
onset door
with 40" TV niche



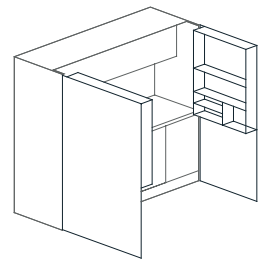
N2
onset door
with low



N3
onset door
with flat front



N4
inset door
with 40" TV niche



N5
inset door
with flat front

Pia Alta

DIMENSIONS

closed 186 x 82 x 200 cm

open 374 x 66 x 200 cm

MATERIALS

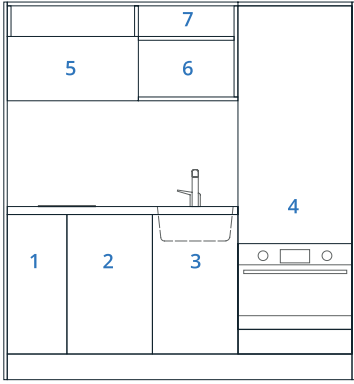
HPL faced particle board or veneer frame, doors, cabinets and inside doors

Worktop laminate 38 mm with inox sink, HPL 6 mm with inox sink or composite material (kerrock)

6 mm worktop, sink and work area sides



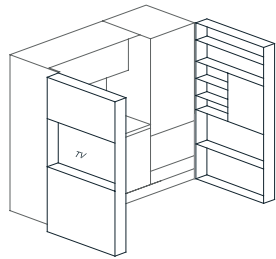
BASE UNIT



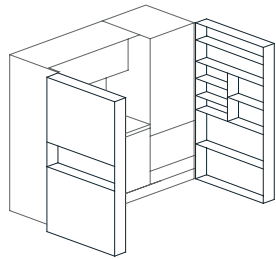
- 1 | 32 cm | cabinet with cooktop, drawer and a shelf
- 2 | 45 cm | space for a built-in dish washer or cabinet with a shelf
- 3 | 45 cm | sink, faucet and waste separator
- 4 | 60 cm | place for high refrigerator, free standing microwave and a drawer or place for high refrigerator, oven and a drawer

- 5 | 69 cm | built-in hood, electricity installations and sockets
- 6 | 53 cm | open shelf or place for free standing microwave
- 7 | 122 cm | open shelf

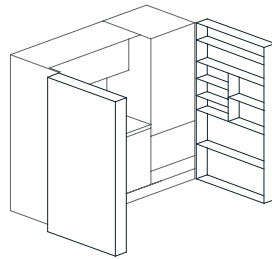
DOOR OPTIONS



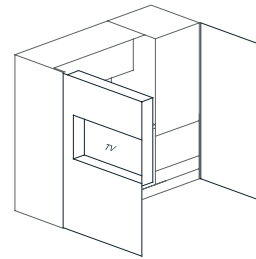
A1
onset door
with 40" TV niche



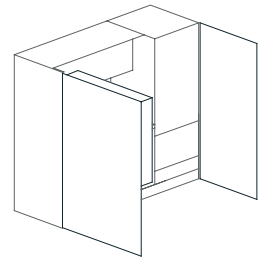
A2
onset door
with low shelf



A3
onset door
with flat front



A4
inset door
with 40" TV niche



A5
inset door
with flat front

Pia Petite

DIMENSIONS

closed 141 x 82 x 200 cm

open 284 x 66 x 200 cm

MATERIALS

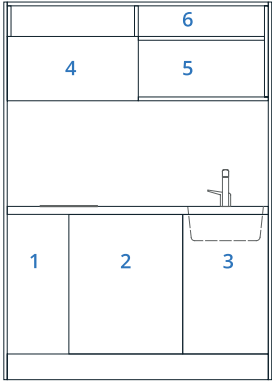
HPL faced particle board or veneer frame, doors, cabinets and inside doors

Worktop laminate 38 mm with inox sink, HPL 6 mm with inox sink or composite material (kerrock)

6 mm worktop, sink and work area sides



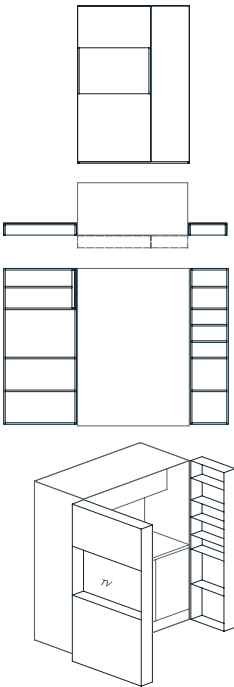
BASE UNIT



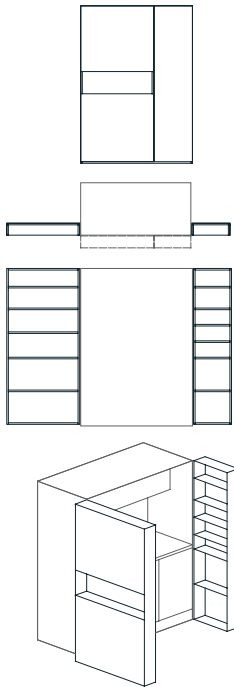
- 1 | 32 cm | cabinet with cooktop, drawer and a shelf
- 2 | 60 cm | place for refrigerator, oven and a drawer or cabinet with a shelf
- 3 | 45 cm | sink, faucet and waste separator

- 4 | 69 cm | built-in hood, electricity installations and sockets
- 5 | 68 cm | place for free standing microwave
- 6 | 137 cm | open shelf

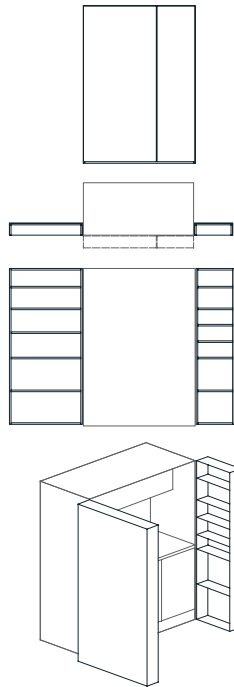
DOOR OPTIONS



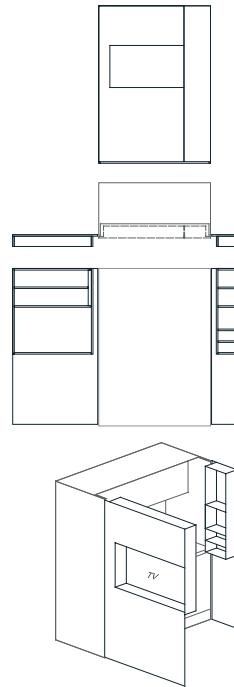
P1
onset door
with 40" TV niche



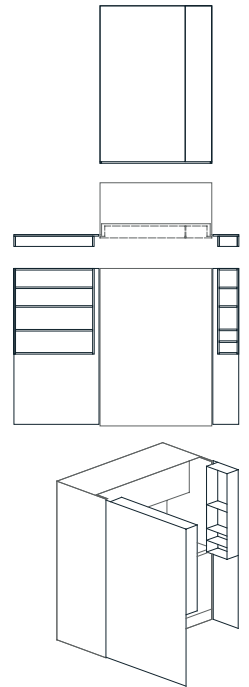
P2
onset door
with low



P3
onset door
with flat front



P4
inset door
with 40" TV niche



P5
inset door
with flat front

Pia Bond

DIMENSIONS

closed 141 x 82 x 200 cm

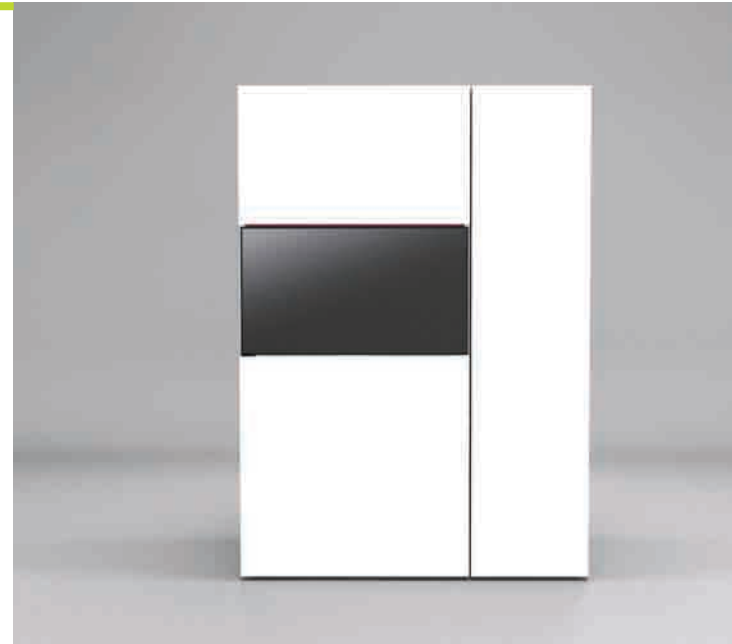
open 284 x 66 x 200 cm

MATERIALS

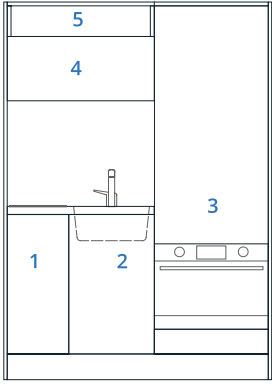
HPL faced particle board or veneer frame, doors, cabinets and inside doors

Worktop laminate 38 mm with inox sink, HPL 6 mm with inox sink or composite material (kerrock)

6 mm worktop, sink and work area sides



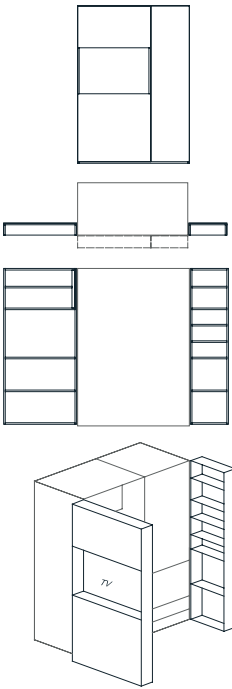
BASE UNIT



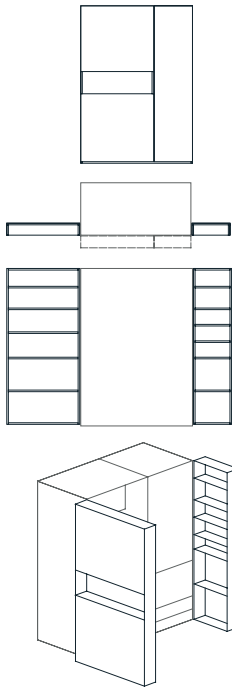
- 1 | 32 cm | cabinet with cooktop, drawer and a shelf
- 2 | 45 cm | sink, faucet and waste separator
- 3 | 60 cm | place for high refrigerator, free standing microwave and a drawer or place for high refrigerator, oven and a drawer

- 4 | 77 cm | built-in hood, electricity installations and sockets
- 5 | 77 cm | open shelf

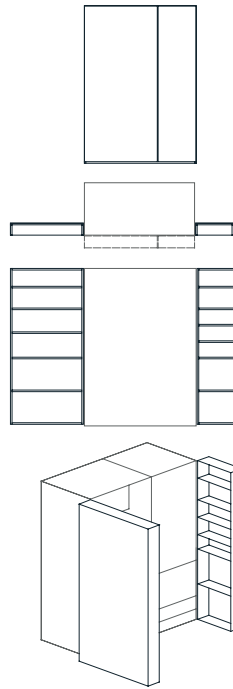
DOOR OPTIONS



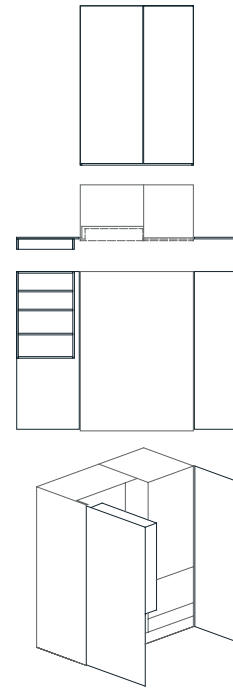
B1
onset door
with 40" TV niche



B2
onset door
with low shelf



B3
onset door
with flat front



B4
inset door
with flat front

Pia Viss L

DIMENSIONS

closed 186 x 69 x 200 cm

open 374 x 69 x 200 cm

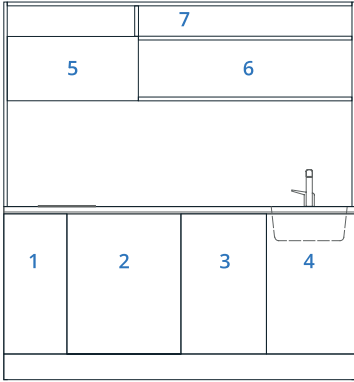
MATERIALS

HPL faced particle board frame, doors, cabinets and inside doors

Worktop laminate 38 mm with inox sink, HPL 6 mm with inox sink or composite material (kerrock) 6 mm worktop and sink



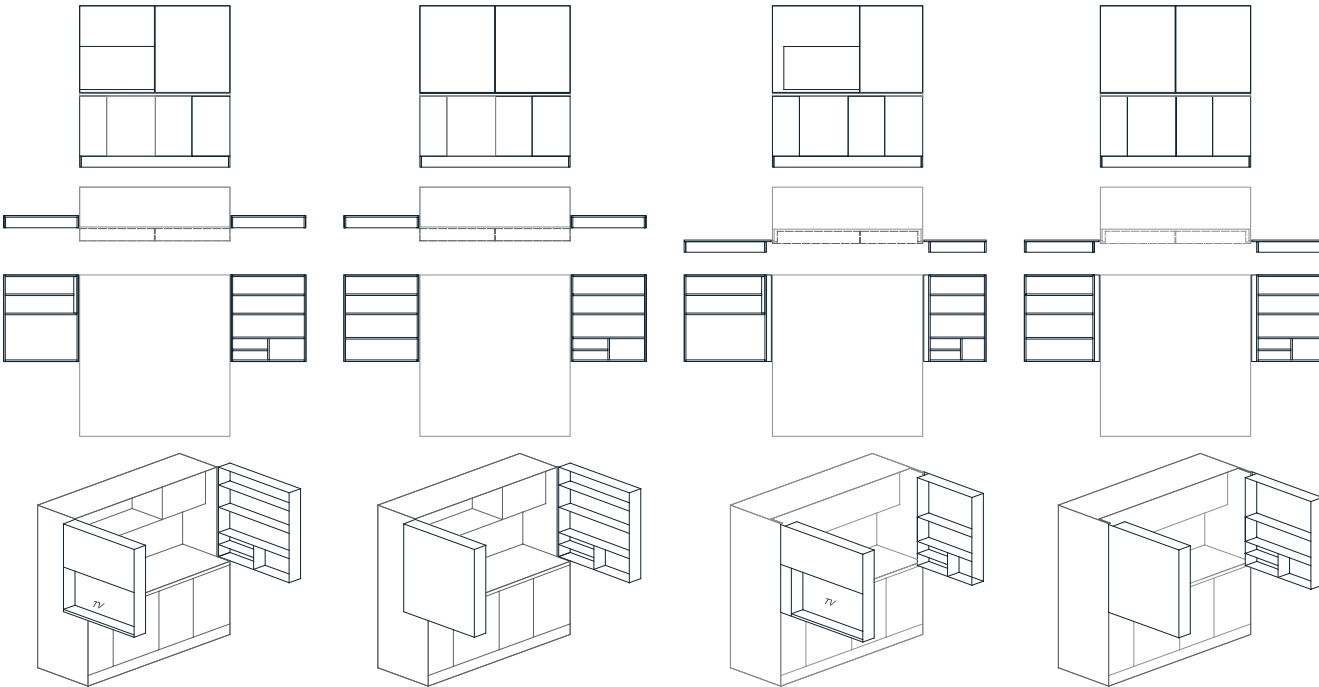
BASE UNIT



- 1 | 45 cm | cabinet with cooktop, drawer and a shelf
- 2 | 45 cm | place for refrigerator, oven and a drawer or cabinet with a shelf
- 3 | 60 cm | space for a built-in dish washer or cabinet with a shelf
- 4 | 32 cm | sink, faucet and waste separator

- 5 | 69 cm | built-in hood, electricity installations and sockets
- 6 | 113 cm | open shelf or place for free standing microwave
- 7 | 182 cm | open shelf

DOOR OPTIONS



L1
onset door
with 40" TV niche

L2
onset door
with flat front

L3
inset door
with 40" TV niche

L4
inset door
with flat front

Pia Viss M

DIMENSIONS

closed 146 x 69 x 200 cm

open 284 x 69 x 200 cm

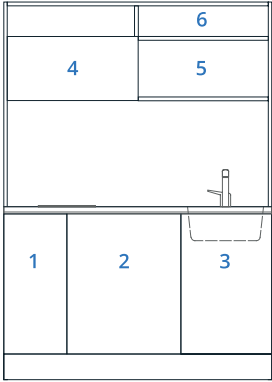
MATERIALS

HPL faced particle board frame, doors, cabinets and inside doors

Worktop laminate 38 mm with inox sink, HPL 6 mm with inox sink or composite material (kerrock) 6 mm worktop and sink



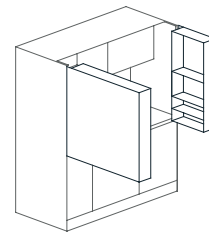
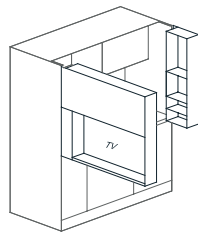
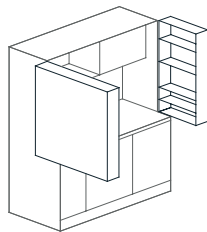
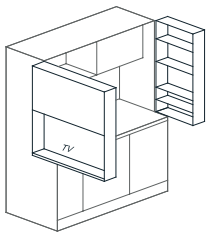
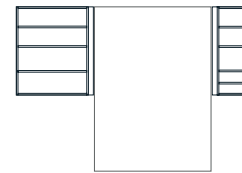
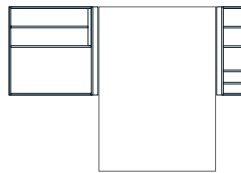
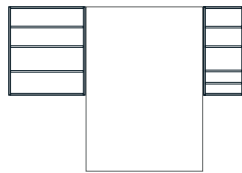
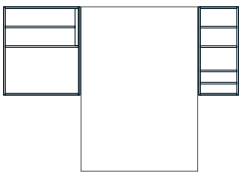
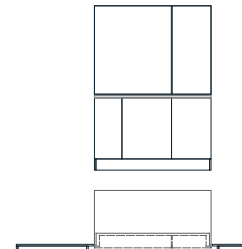
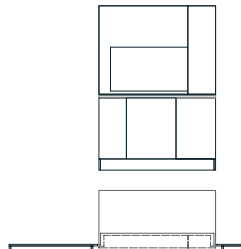
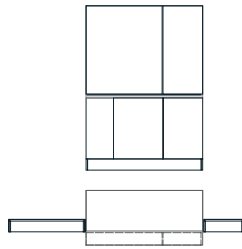
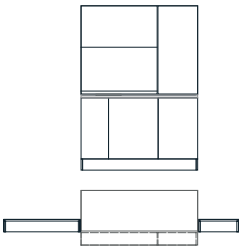
BASE UNIT



- 1 | 45 cm | cabinet with cooktop, drawer and a shelf
- 2 | 60 cm | place for refrigerator, oven and a drawer or cabinet with a shelf
- 3 | 37 cm | sink, faucet and waste separator

- 4 | 69 cm | built-in hood, electricity installations and sockets
- 5 | 73 cm | open shelf or place for free standing microwave
- 6 | 142 cm | open shelf

DOOR OPTIONS



M1
onset door
with 40" TV niche

M2
onset door
with flat front

M3
inset door
with 40" TV niche

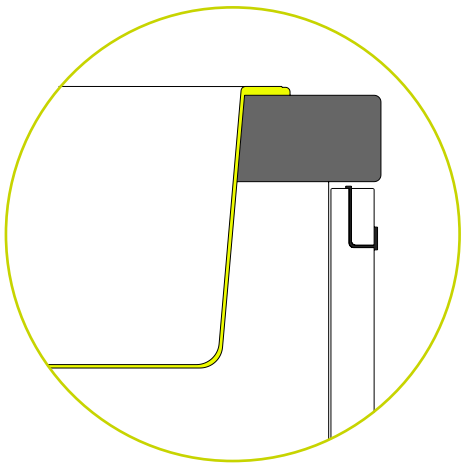
M4
inset door
with flat front

WORKTOP TYPES

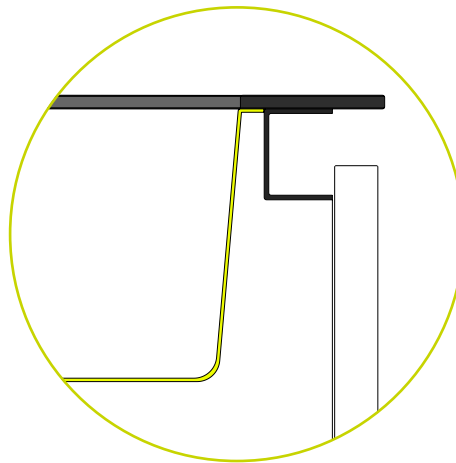
There are three types of worktops for PIA kitchen to choose from: 38 mm thick laminate board, 6 mm thick HPL compact laminate boards with black core, and 6 mm thick composite material Kerrock board.

In regard to selecting the worktop, there is also a difference between handles on lower cabinets. If selecting a 38 mm laminate board, the lower cabinets have visible inset aluminium handles. When selecting 6 mm HPL compact or Kerrock board, there is a metal profile under the worktop so the cabinets have no visible handles.

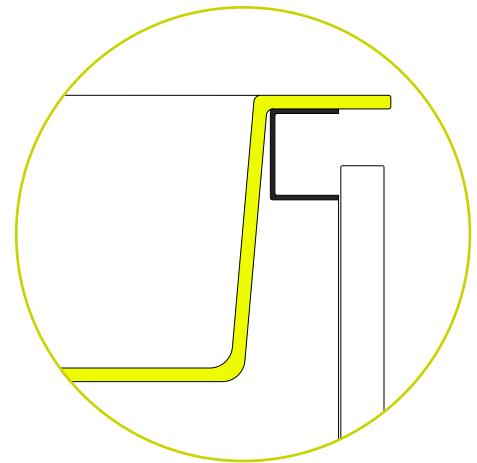
To prevent water penetration, the worktop is sealed by an aluminium profile along the sides and back of the kitchen. When selecting Kerrock worktop, there is a possibility of covering the entire work area (worktop, sides and back) with Kerrock. This can be made on demand.



38 MM THICK LAMINATE
with inset stainless steel sink



6 MM HPL COMPACT LAMINATE WITH BLACK CORE
with undermount stainless steel sink



6 MM COMPOSITE MATERIAL KERROCK
with solid surface seamlessly integrated
sink

DETAILS

In terms of design PIA has put an emphasis on many subtle details which make this product a high end piece of furniture.

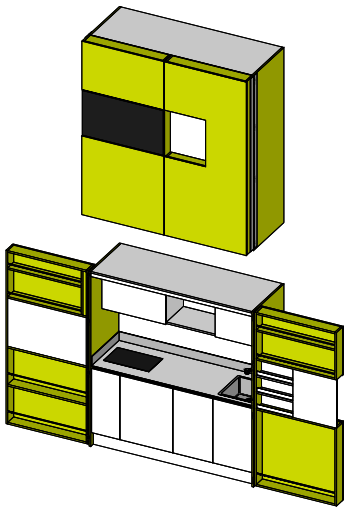
High quality materials and textures, fittings and appliances ensure satisfaction even to the most demanding user. A wide selection of predefined colors as well as custom made combinations guarantee to match both existing as well as new spaces.

This has been confirmed by several international award juries so far. PIA has been awarded International Innovation Award - Mobil Optimum Award (2014), Interior Innovation Award - Best of Best (2015), Green Product Award - Winner (2016), and IDEA Award - Selection (2016).

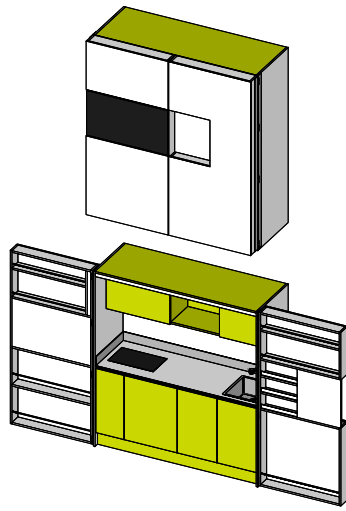


COLOR SELECTION

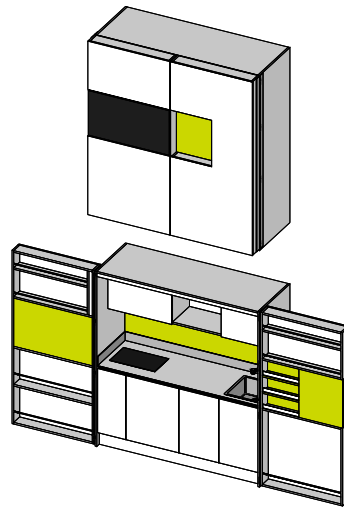
When planning your PIA, you can select among several colors and surfaces to match the tone of your overall space. To make this selection easier, we've divided PIA into four areas.



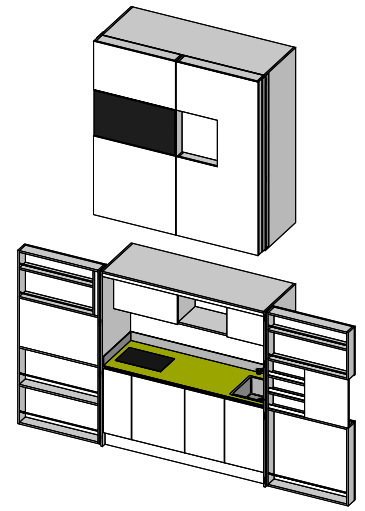
AREA 1
outer sides and doors



AREA 2
lower doors
and upper cabinets



AREA 3
central door area
and kitchen back



AREA 4
worktop

Check out our complete color selection and limited editions online at www.dizzconcept.com

On the next page there are several preselected color combinations. There are numerous possible combinations and anyone can combine colors to compliment their space.



pia around the world



Pia has found its place in many homes so far: serving as a second kitchen in big houses in USA and Canada, fully equipped space saving kitchen in micro apartments of Hong Kong and Taipei, as well as non-intrusive kitchen in exclusive holiday homes on Mediterranean coast.







DESIGNER



In 1990, architect Darko Špiljarić founded the company INkea which changed its name to dizz concept as of January 2016. His critically acclaimed design focuses primarily on innovation and retaining high standards in regards to ergonomics and ecology.

NOTES

DISCLAIMER

Photos are for illustrative purposes only. Actual colors may vary. This brochure is for informational purposes only and is made in accordance with the information at the time of printing. Due to possible discontinuations or additions to options and finishes, we kindly ask you to contact us for all queries regarding this product or any additional or new information you might require to reach final purchase decision. We reserve the right to make any necessary modifications and improvements to the product illustrated in this brochure.

LEGAL

Pop-up kitchen Pia design is protected under law. All intellectual property rights, such as dizzconcept trademark and copyrights are reserved. Nothing contained in this brochure may be reproduced or sold without our written permission. // dizz concept Ltd. conforms to the Quality Management System standard ISO 9001:2008 and Environmental Management System standard 14001:2004

All rights reserved. ©2017 dizzconcept